

# Lamb Of God

Words and Music by  
Twila Paris

♩ = 52

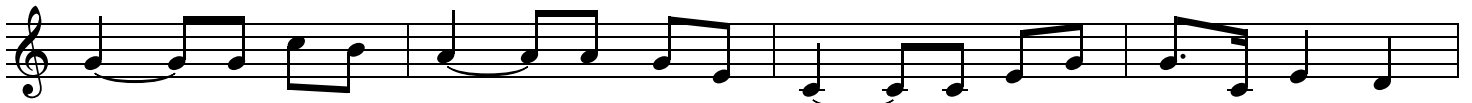
**VERSE**

C G C G/B Am Fmaj<sup>7</sup> C/E

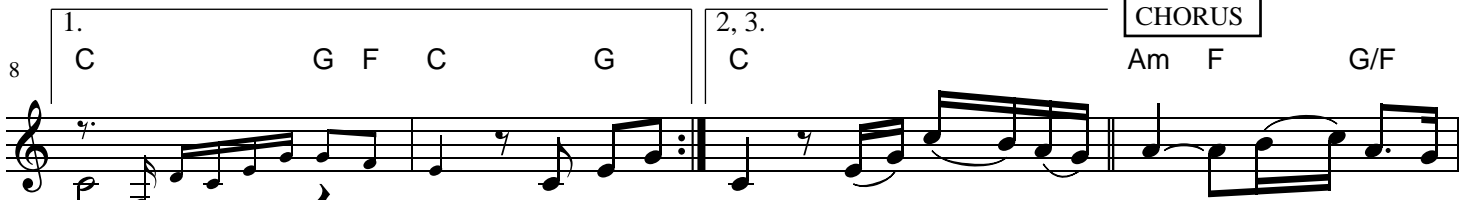


1. Your on - ly Son, no sin to hide; But You have sent \_\_\_\_ Him from Your \_  
 (2. Your gift of) love they cru - ci - fied; They laughed and scorned \_ Him as He \_\_\_\_  
 (3. I was so) lost I should have died; But You have brought \_ me to Your \_

4 G<sup>sus</sup> G G/F Am Fmaj<sup>7</sup> C/E Am Fmaj<sup>7</sup> C/G G<sup>sus</sup>



side, \_\_\_\_ to walk up - on \_\_\_\_ this guilt - y sod, \_\_\_\_ and to be - come the Lamb of  
 died. \_\_\_\_ The hum - ble King \_\_\_\_ they named a fraud, \_\_\_\_ and sac - ri - ficed the Lamb of  
 side \_\_\_\_ to be led by \_\_\_\_ Your staff and rod, \_\_\_\_ and to be called a lamb of

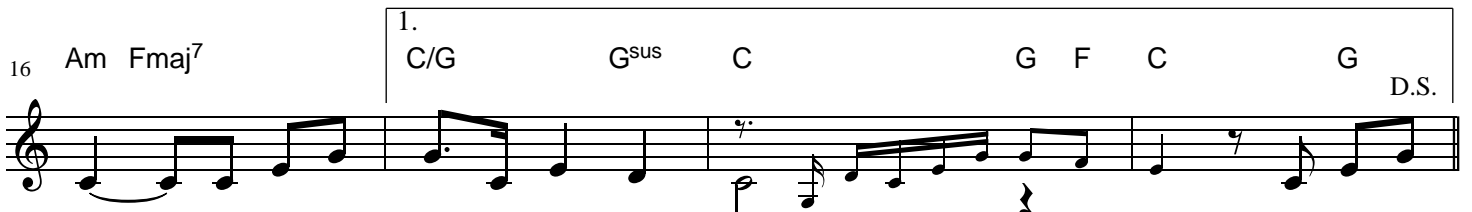


**CHORUS**

8 1. C G F C G 2, 3. C Am F G/F  
 God. 2. Your gift of God. Oh \_ Lamb \_ of \_ God, \_ sweet \_ Lamb of



12 C/E C G/B Am Fmaj<sup>7</sup> C/E G<sup>sus</sup> G G/F Am Fmaj<sup>7</sup> C/E  
 God. \_\_\_\_ I love the ho - ly Lamb of \_\_\_\_ God. \_\_\_\_ Oh, wash me in \_\_\_\_ His pre-cious



16 Am Fmaj<sup>7</sup> 1. C/G G<sup>sus</sup> C G F C G D.S.  
 blood, \_ my Je - sus Christ, the Lamb of God. 3. I was so

20

2.

C/G      G<sup>sus</sup>      C      G      F      C      G      F      C

Christ, the Lamb of God.